



12A CAMBRIDGE GROVE

HOVE, BN3 3ED

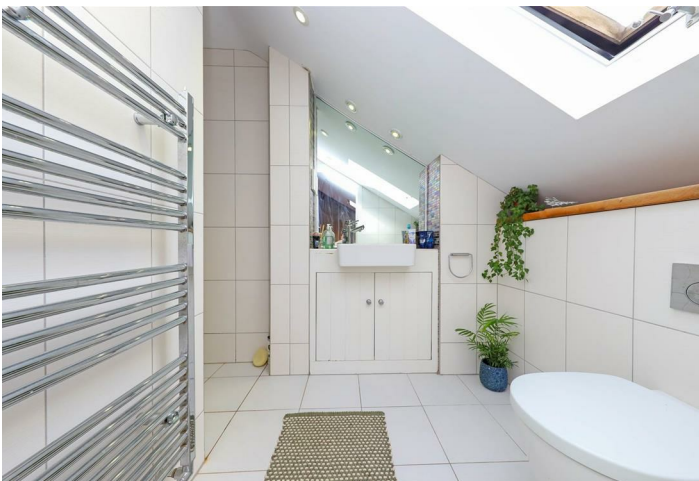
FREEHOLD

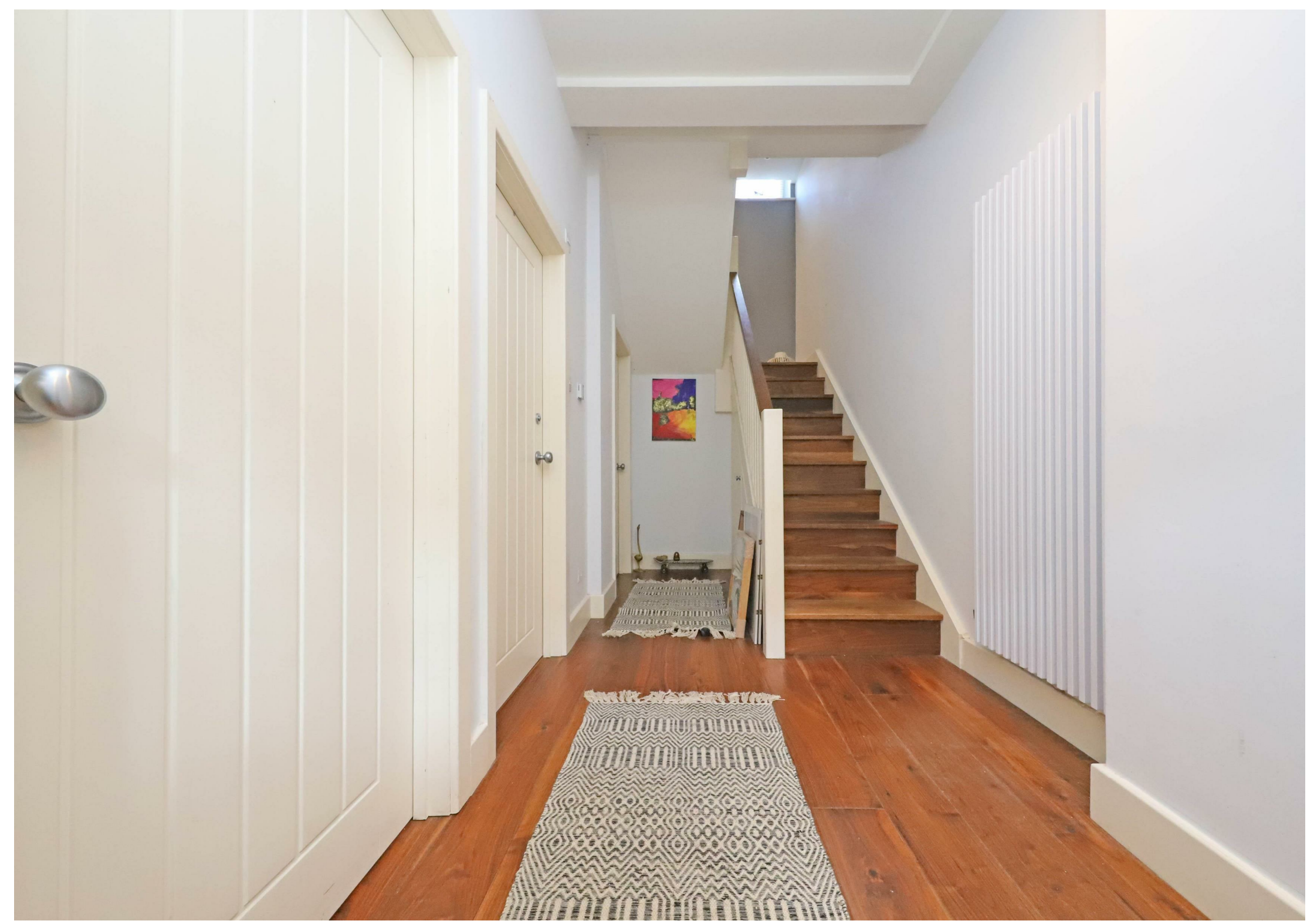
Superb Town House located on this attractive cobbled mews, moments from Hove Mainline Station. This beautifully presented property benefits from good sized rooms and lovely layout across three floors comprising; on the ground floor two bedrooms and modern bathroom. The first floor has an impressive open plan double aspect living space, with sash windows to front and rear and then a master bedroom on the top floor with en-suite shower room. There is the additional benefit's of the private mews having its own parking permit system for the residents and no onward chain.

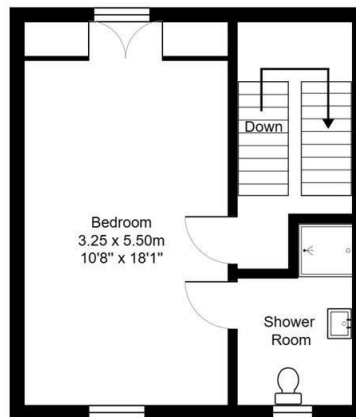
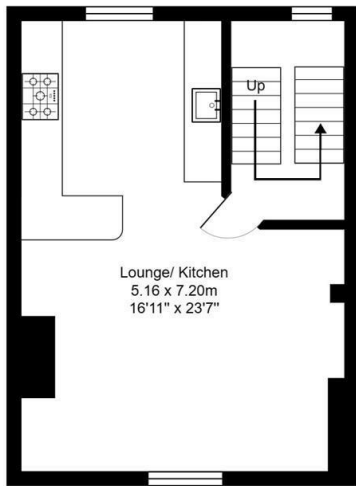
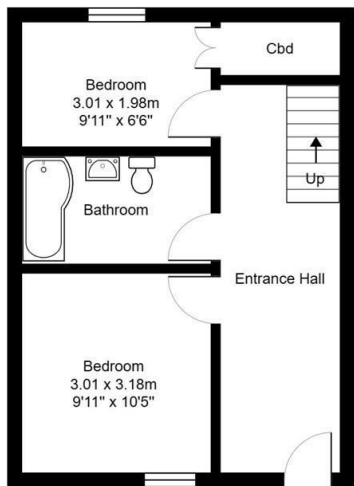
The location is perfect to access all the City has to offer with popular shops, cafes and restaurants in almost every direction, most notably on Church Road. Hove seafront is within easy reach whilst Hove Mainline Station provides regular and direct links to London.

**Nicholas
James**

SALES LETTINGS AUCTIONS







Cambridge Grove

Total Area: 105.7 m² ... 1138 ft²

All measurements are approximate and for display purposes only.



Agents Note: Whilst every care has been taken to prepare these particulars, they are for guidance purposes only. All measurements are approximate and are for general guidance purposes only and whilst every care has been taken to ensure their accuracy, they should not be relied upon and potential buyers/tenants are advised to recheck the measurements

Hove Sales
 Ground Floor 8 The Drive
 Hove
 East Sussex
 BN3 3JA

01273 917915
 hello@nicholasjamesproperty.co.uk
 www.nicholasjamesproperty.co.uk

Nicholas
 James

SALES LETTINGS AUCTIONS