



54 DOWNS WALK PEACEHAVEN, BN10 7UD

£550,000
FREEHOLD

*FIVE SOLD, ONE REMAINING * Superb bungalow finished to an extremely high specification on this impressive new build plot - consisting of six detached bungalows and two detached houses.

Each bungalow benefits from bright and spacious rooms comprising; three double bedrooms, family bathroom, en-suite shower room and fantastic open plan living area with luxury kitchen and bi folding doors overlooking the delightful rear garden. To the front there is a hardstand providing off street parking for multiple cars. Additional features include solar panels, air source heat pump, under floor heating and electric vehicle charging point.

This sought after location, moments from open fields and countryside walks offers easy access to local amenities, popular schools and shops. There are bus services passing nearby providing regular access to surrounding areas including Brighton City Centre.

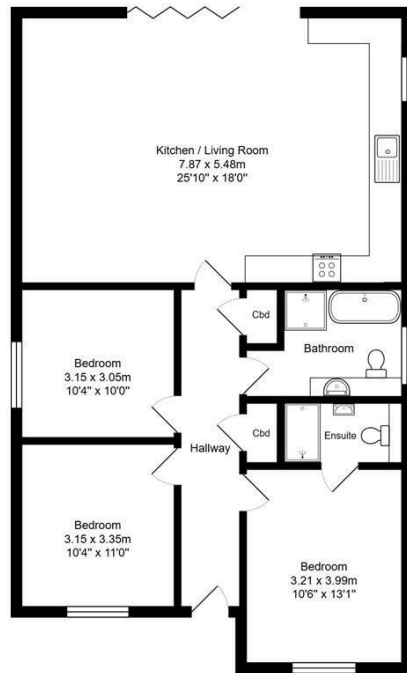
Call for more information and to book in for the open day.

Nicholas James

SALES LETTINGS AUCTIONS



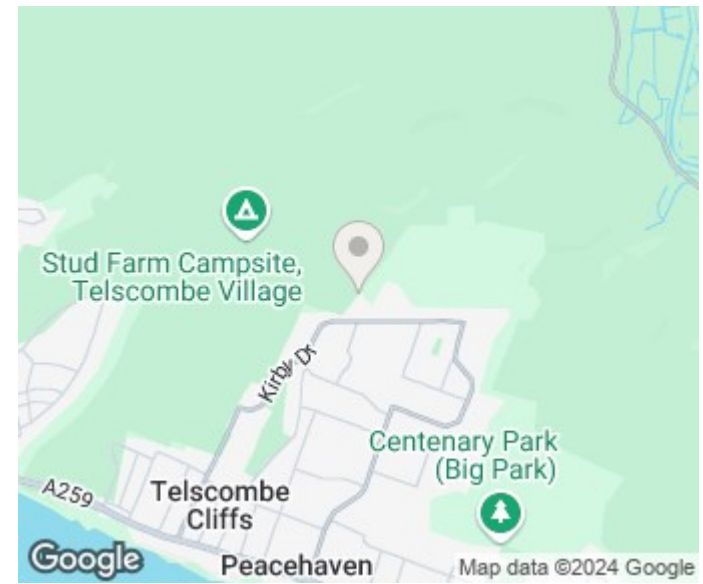




Downs Walk, Peacehaven, BN10 7ST

Total Area: 99.8 m² ... 1074 ft²

All measurements are approximate and for display purposes only.



Energy Efficiency Rating		Current	Potential
Very energy efficient - lower running costs			
(92 plus) A		89	
(81-91) B			
(69-80) C			
(55-68) D			
(39-54) E			
(21-38) F			
(1-20) G			
Not energy efficient - higher running costs			
England & Wales		EU Directive 2002/91/EC	

Agents Note: Whilst every care has been taken to prepare these particulars, they are for guidance purposes only. All measurements are approximate and are for general guidance purposes only and whilst every care has been taken to ensure their accuracy, they should not be relied upon and potential buyers/tenants are advised to recheck the measurements

Hove Sales
Ground Floor 8 The Drive
Hove
East Sussex
BN3 3JA

01273 917915
hello@nicholasjamesproperty.co.uk
www.nicholasjamesproperty.co.uk

**Nicholas
James**

SALES LETTINGS AUCTIONS