



## 7 THYME CLOSE SHOREHAM-BY-SEA, BN43 6JJ

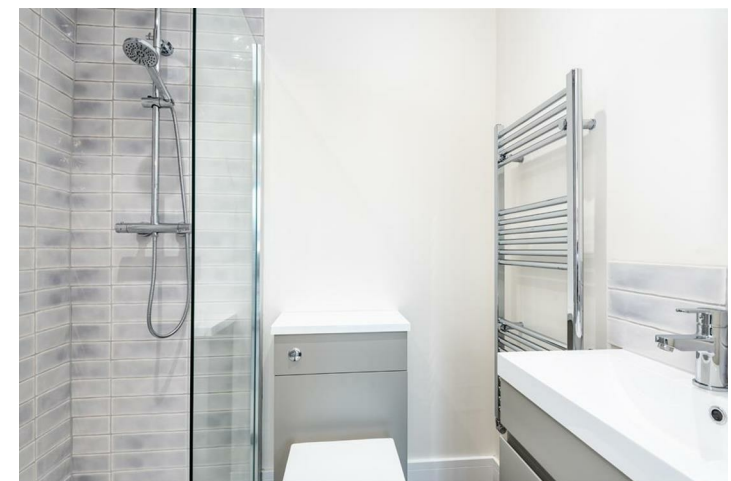
FREEHOLD

Guide Price £550,000 - £600,000. Beautifully modernised semi-detached house benefitting from a fantastic two storey side extension. The property has been cleverly designed and modernised throughout to create flexible, bright and spacious accommodation. On the ground floor there is an impressive double aspect open plan living with lounge area, dining area and stunning new kitchen overlooking the rear garden. The extension has allowed space to add a useful utility room and further reception room/ optional bedroom with newly fitted shower room. Upstairs there are four bedrooms, family bathroom and good sized en-suite shower room. Outside there is a hard stand providing off street parking and a delightful rear garden.

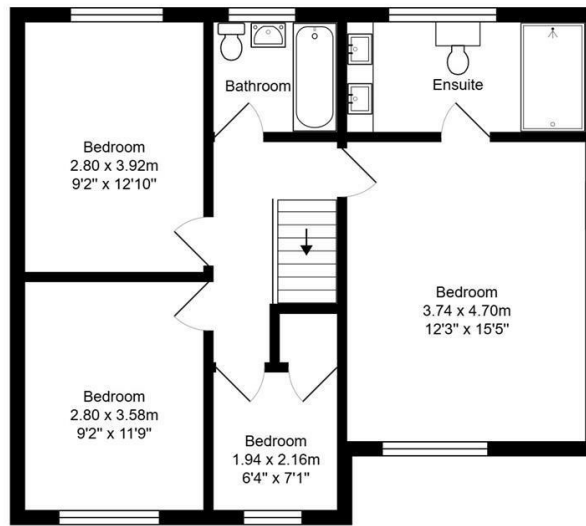
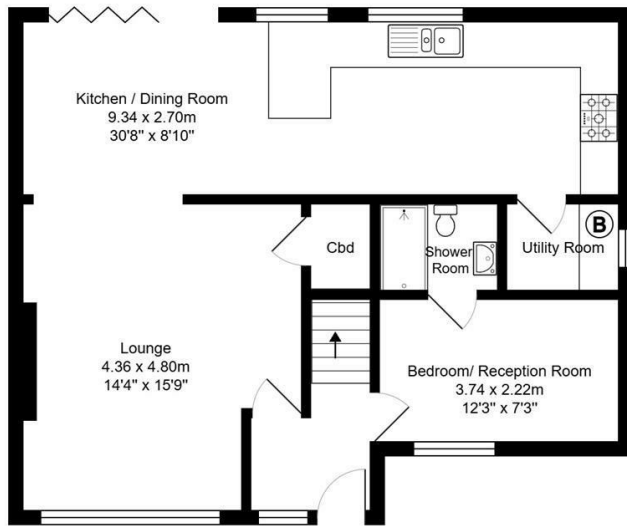
This sought after residential location offers easy access to local shops, cafes and amenities in Shoreham & Southwick along with popular schools in the area, including Shoreham Academy. Bus services pass close by providing access to surround areas, whilst Shoreham mainline station offers regular and direct links to Brighton, Worthing & London.

Nicholas  
James

SALES LETTINGS AUCTIONS



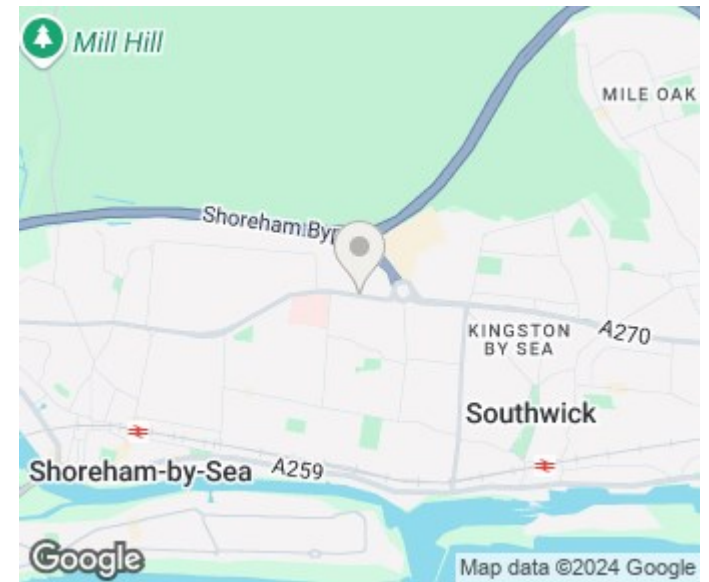




Thyme Close

Total Area: 130.5 m<sup>2</sup> ... 1405 ft<sup>2</sup>

All measurements are approximate and for display purposes only.



Agents Note: Whilst every care has been taken to prepare these particulars, they are for guidance purposes only. All measurements are approximate and are for general guidance purposes only and whilst every care has been taken to ensure their accuracy, they should not be relied upon and potential buyers/tenants are advised to recheck the measurements

Hove Sales  
Ground Floor 8 The Drive  
Hove  
East Sussex  
BN3 3JA

01273 917915  
hello@nicholasjamesproperty.co.uk  
www.nicholasjamesproperty.co.uk

Nicholas  
James

SALES LETTINGS AUCTIONS