



17 ROBERTS ROAD
LANCING, BN15 8AR

£1,850 PER MONTH

Fantastic semi-detached house with detached garage, off street parking and west facing garden. This superb property benefits from spacious and well presented accommodation comprising: three bedrooms, bathroom, lounge with bay windows and lovely kitchen/dining room opening onto the delightful rear garden.

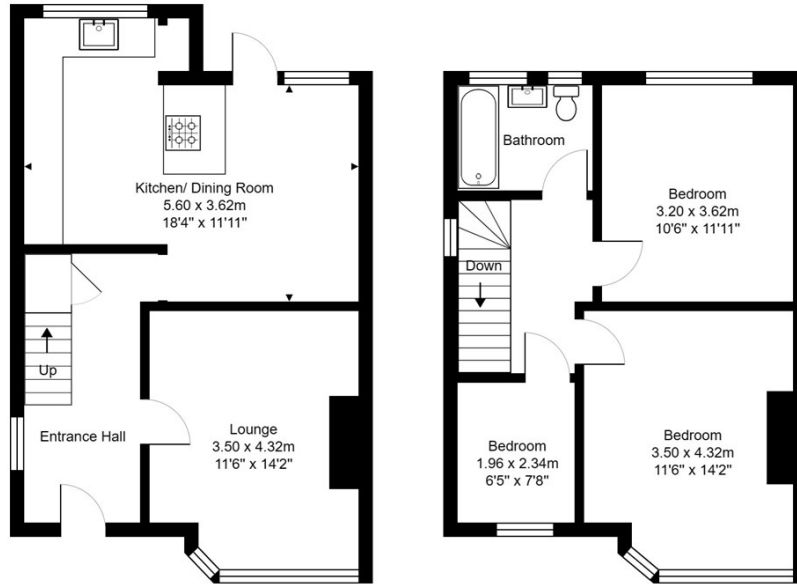
The location will appeal to many being within easy reach of schools, shops, cafes and restaurants including being a short walk away from Lancing seafront and the popular Perch on Landing beach. Lancing mainline station is close by providing regular links to surrounding areas including direct links to London.

**Nicholas
James**

SALES LETTINGS AUCTIONS







Roberts Road, Lancing

Total Area: 89.3 m² ... 961 ft²

All measurements are approximate and for display purposes only.



Energy Efficiency Rating		Current	Potential
Very energy efficient - lower running costs			
(92 plus) A			
(81-91) B			84
(69-80) C		67	
(55-68) D			
(39-54) E			
(21-38) F			
(1-20) G			
Not energy efficient - higher running costs			
England & Wales		EU Directive 2002/91/EC	

Agents Note: Whilst every care has been taken to prepare these particulars, they are for guidance purposes only. All measurements are approximate and are for general guidance purposes only and whilst every care has been taken to ensure their accuracy, they should not be relied upon and potential buyers/tenants are advised to recheck the measurements

Hove Sales
Ground Floor 8 The Drive
Hove
East Sussex
BN3 3JA

01273 917915
hello@nicholasjamesproperty.co.uk
www.nicholasjamesproperty.co.uk

**Nicholas
James**

SALES LETTINGS AUCTIONS