



18 RIDGEWOOD AVENUE
SALTDEAN, BN2 8HH

£1,700 PER MONTH

Attractive detached bungalow with off street parking and garage. This well presented property benefits from bright and spacious accommodation comprising; two double bedrooms, lounge/ diner, separate kitchen, shower room, WC and conservatory leading to the delightful, good sized rear garden.

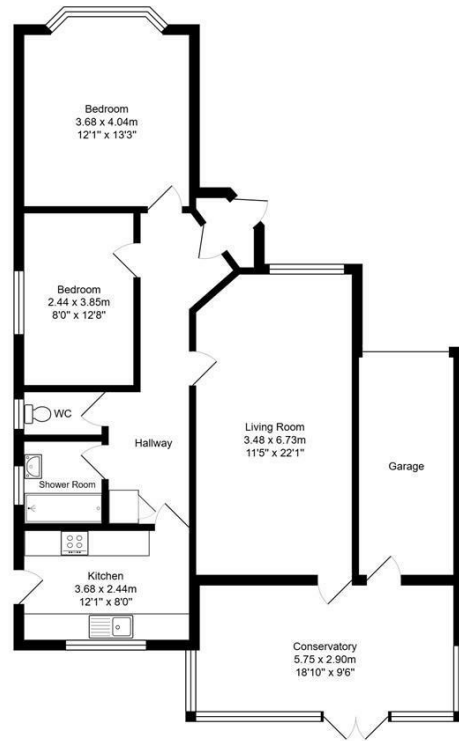
Situated within reach of local shops, downland walks, Saltdean Park and the Lido, local schools, the beach and bus services to Brighton & Eastbourne.

**Nicholas
James**

SALES LETTINGS AUCTIONS







Total Area: 94.8 m² ... 1021 ft² (excluding garage)
All measurements are approximate and for display purposes only.



Agents Note: Whilst every care has been taken to prepare these particulars, they are for guidance purposes only. All measurements are approximate and are for general guidance purposes only and whilst every care has been taken to ensure their accuracy, they should not be relied upon and potential buyers/tenants are advised to recheck the measurements

Hove Lettings
Ground Floor 8 The Drive
Hove
East Sussex
BN3 3JA

01273 917915
hello@nicholasjamesproperty.co.uk
www.nicholasjamesproperty.co.uk

Nicholas
James

SALES LETTINGS AUCTIONS