



5 ROMAN ROAD

HOVE, BN3 4LB

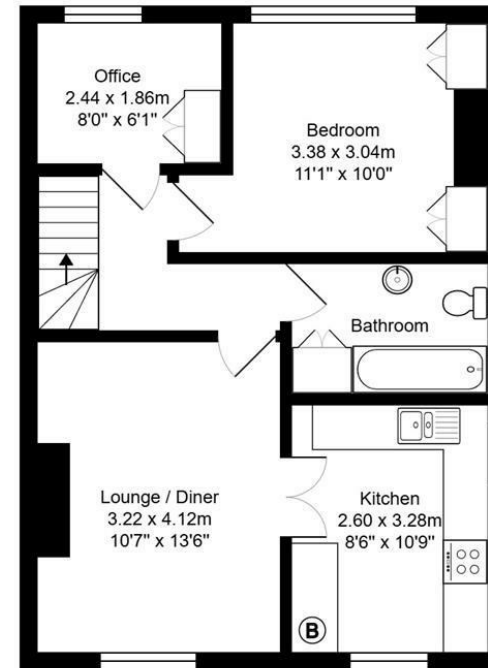
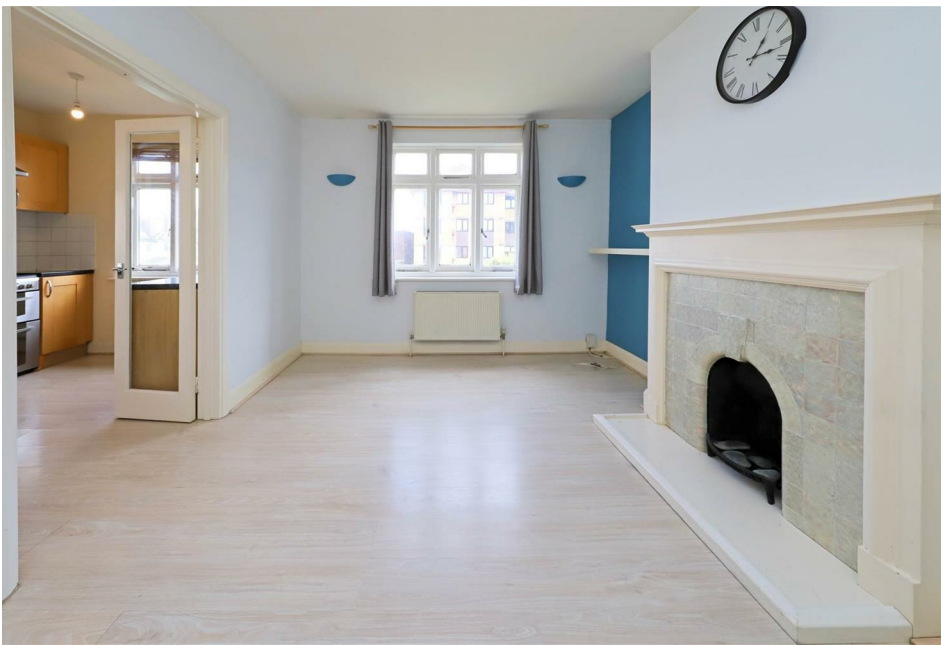
LEASEHOLD

Superb first floor (top) apartment, moments from Hove seafront. This lovely apartment benefits from bright and spacious accommodation comprising; good sized double bedroom with fitted wardrobes, smaller second bedroom/ office, bathroom, lounge diner opening into the kitchen via double doors. Additional benefits include a long lease (approx 150 years) and no onward chain.

The location will appeal to many, South of New Church Road in arguably the City's prime position. Hove seafront is moments away as is Wish Park with its popular café and play area. Hove & Portslade mainline stations are easily accessible providing regular and direct links to London.

**Nicholas
James**

SALES LETTINGS AUCTIONS



5 Roman Road

Total Area: 50.0 m² ... 538 ft²

All measurements are approximate and for display purposes only.

Agents Note: Whilst every care has been taken to prepare these particulars, they are for guidance purposes only. All measurements are approximate and are for general guidance purposes only and whilst every care has been taken to ensure their accuracy, they should not be relied upon and potential buyers/tenants are advised to recheck the measurements

Hove Sales
Ground Floor 8 The Drive
Hove
East Sussex
BN3 3JA

01273 917915
hello@nicholasjamesproperty.co.uk
www.nicholasjamesproperty.co.uk

Nicholas
James

SALES LETTINGS AUCTIONS