



15 HILLCROFT

PORTSLADE, BN41 2QD

FREEHOLD

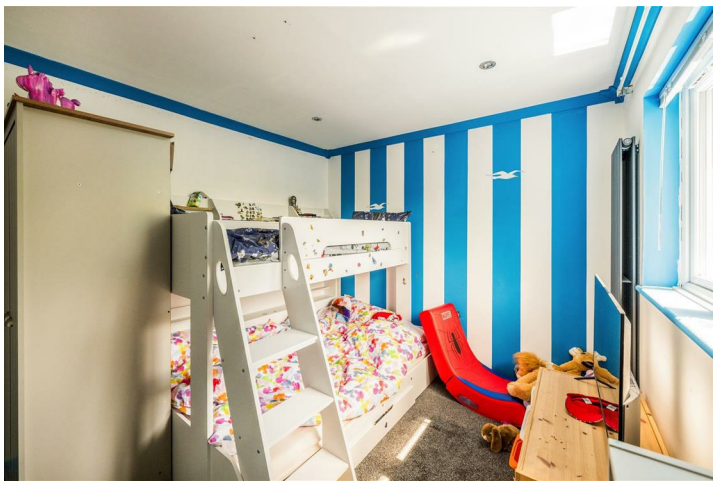
A perfect first time buy!! This delightful two-bedroom end of terrace house offers a perfect blend of comfort and modern living. The property Spans 738 square feet, is well presented and ready for you to move in and make it your own.

On the ground floor there's a modern kitchen with a separate lounge diner which opens onto the conservatory that overlooks the west facing garden. The first floor occupies two well proportioned bedrooms and the the family bathroom.

Two further key features of this modern end of terrace house has to be the west facing garden and the off street parking to the front.

**Nicholas
James**

SALES LETTINGS AUCTIONS





15 Hillcroft

Approximate Gross Internal Area = 68.6 sq m / 738 sq ft

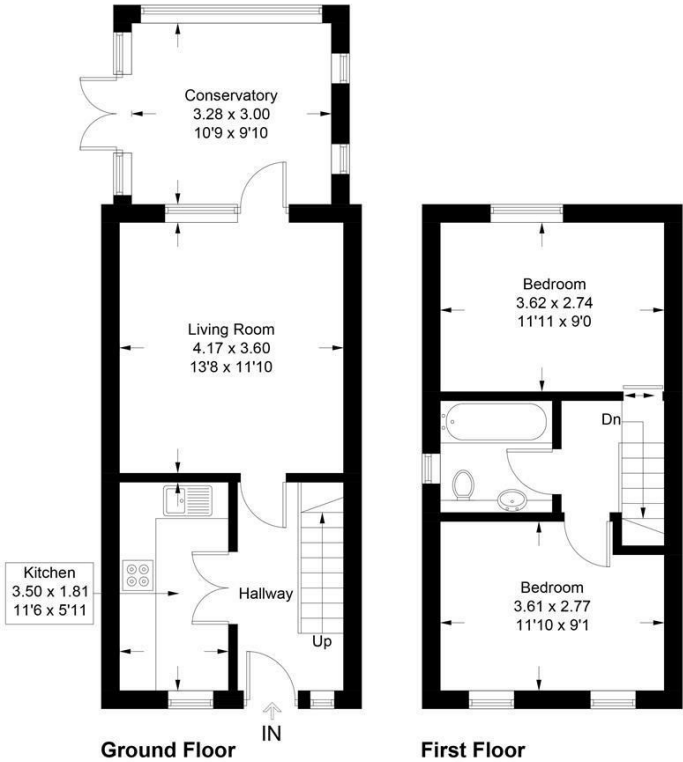
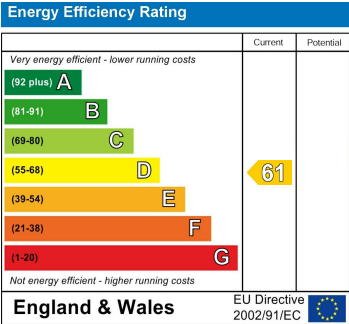
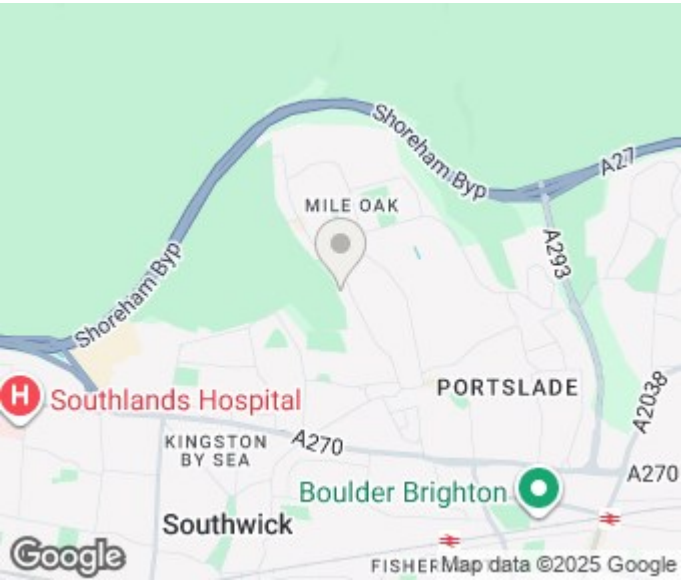


Illustration for identification purposes only, measurements are approximate, not to scale. Fourlabs.co © (ID1216307)



Agents Note: Whilst every care has been taken to prepare these particulars, they are for guidance purposes only. All measurements are approximate and are for general guidance purposes only and whilst every care has been taken to ensure their accuracy, they should not be relied upon and potential buyers/tenants are advised to recheck the measurements

Hove Sales
Ground Floor 8 The Drive
Hove
East Sussex
BN3 3JA

01273 917915
hello@nicholasjamesproperty.co.uk
www.nicholasjamesproperty.co.uk

Nicholas
James
SALES LETTINGS AUCTIONS