



65 CROWN ROAD BRIGHTON, BN41 1SJ

£1,750 PCM

Delightful three bedroom family home in South Portslade. This superb period property has been neutrally decorated throughout with bright and spacious rooms arranged over two floors comprising; large living/dining room, modern kitchen with downstairs bathroom, upstairs you have three well proportioned bedrooms. There is also a delightful low maintenance rear garden.

It is easy to see why South Portslade has become so popular being within easy reach of popular local shops, cafes and amenities along with good transport links into the City centre and surrounding areas. Portslade mainline station with regular and direct links to London is within easy reach.

**Nicholas
James**
SALES LETTINGS AUCTIONS





65 Crown Road

Approximate Gross Internal Area = 87.7 sq m / 944 sq ft

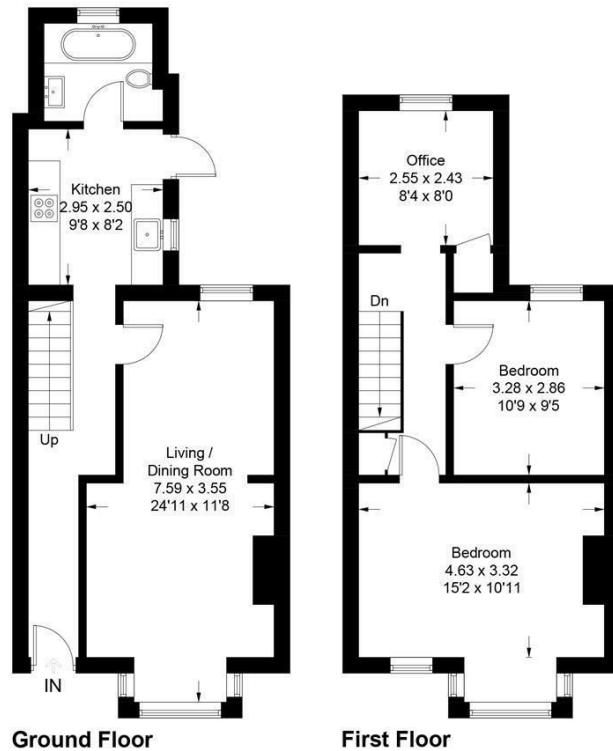


Illustration for identification purposes only, measurements are approximate, not to scale. Fourlabs.co © (ID1201286)



Energy Efficiency Rating		
	Current	Potential
Very energy efficient - lower running costs		
(92 plus) A		
(81-91) B		
(69-80) C		
(55-68) D		
(39-54) E		
(21-38) F		
(1-20) G		
Not energy efficient - higher running costs		
England & Wales		EU Directive 2002/91/EC

Agents Note: Whilst every care has been taken to prepare these particulars, they are for guidance purposes only. All measurements are approximate and are for general guidance purposes only and whilst every care has been taken to ensure their accuracy, they should not be relied upon and potential buyers/tenants are advised to recheck the measurements

Hove Lettings
Ground Floor 8 The Drive
Hove
East Sussex
BN3 3JA

01273 917915
hello@nicholasjamesproperty.co.uk
www.nicholasjamesproperty.co.uk

Nicholas
James

SALES LETTINGS AUCTIONS