



25A CLIFTON TERRACE

BRIGHTON, BN1 3HA

£2,500 PCM

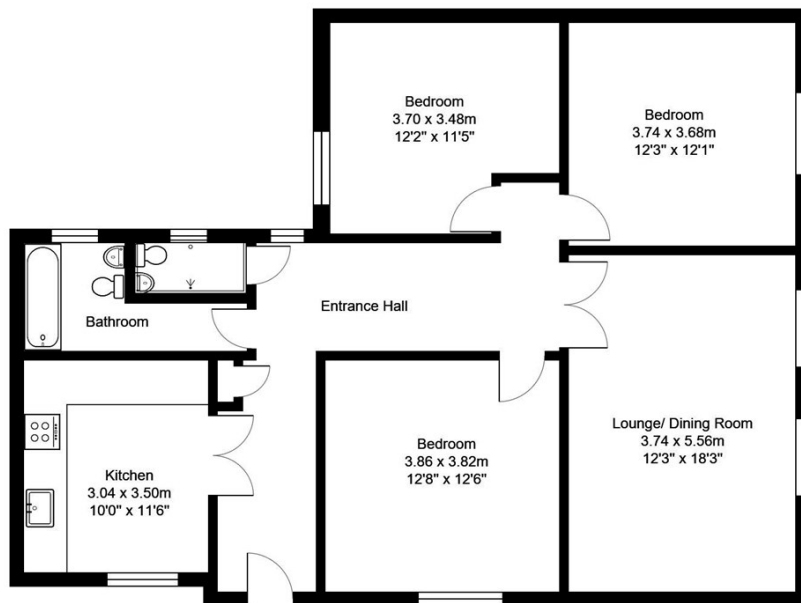
Location Location Location!! Fantastic apartment occupying the entire first floor of this delightful period building, in arguably the most sought after location in the City. This superb property has a large list of benefits, including it's own street entrance via a private patio area, 3 large bedrooms, has a lovely layout with all rooms benefitting from plenty of natural light and accessed off the large, inviting entrance hall. Wooden shutters compliment the sash windows, whilst the west facing views from the lounge diner are sensational, taking in the pretty neighbouring properties with the South Downs and Chanctonbury ring in the distance.

The location speaks for itself being within almost immediate access to the vibrant City centre, Brighton mainline station and the seafront.

**Nicholas
James**
SALES LETTINGS AUCTIONS







Clifton Terrace

Total Area: 100.3 m² ... 1080 ft²

All measurements are approximate and for display purposes only.



Energy Efficiency Rating		
	Current	Potential
Very energy efficient - lower running costs		
(92 plus) A		
(81-91) B		
(69-80) C	69	72
(55-68) D		
(39-54) E		
(21-38) F		
(1-20) G		
Not energy efficient - higher running costs		
England & Wales	EU Directive 2002/91/EC	

Agents Note: Whilst every care has been taken to prepare these particulars, they are for guidance purposes only. All measurements are approximate and are for general guidance purposes only and whilst every care has been taken to ensure their accuracy, they should not be relied upon and potential buyers/tenants are advised to recheck the measurements

Hove Lettings
Ground Floor 8 The Drive
Hove
East Sussex
BN3 3JA

01273 917915
hello@nicholasjamesproperty.co.uk
www.nicholasjamesproperty.co.uk

Nicholas
James

SALES LETTINGS AUCTIONS