



## 3 SILLWOOD TERRACE

BRIGHTON, BN1 2LR

£400,000  
LEASEHOLD

Guide Price £400,000- £450,000. Situated in the vibrant area of Sillwood Terrace, Brighton, this charming first floor apartment offers a delightful blend of comfort and convenience. The apartment features two well-proportioned bedrooms, superb south facing living room with Juliet balcony, modern kitchen and bathroom.

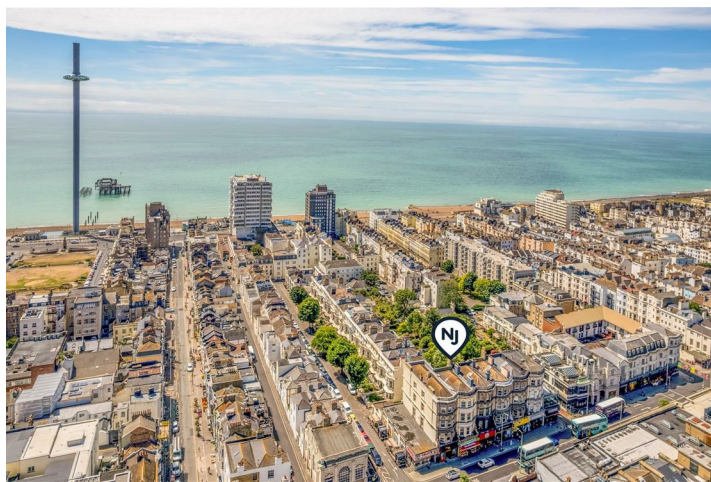
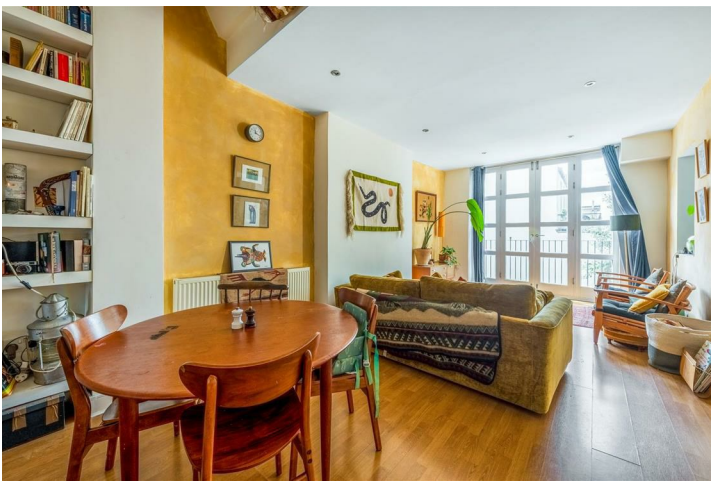
Living in Sillwood Terrace means you are just a stone's throw away from the bustling heart of Brighton, with its eclectic mix of shops, cafes, and cultural attractions. The nearby seafront offers a picturesque setting for leisurely strolls, while excellent transport links make commuting a breeze.

This apartment is an excellent opportunity for those looking to embrace the lively lifestyle that Brighton has to offer, all within a comfortable and well-appointed home.

**Nicholas  
James**

SALES LETTINGS AUCTIONS











## Flat 1, 3 Silwood Terrace

Approximate Gross Internal Area = 87.9 sq m / 946 sq ft

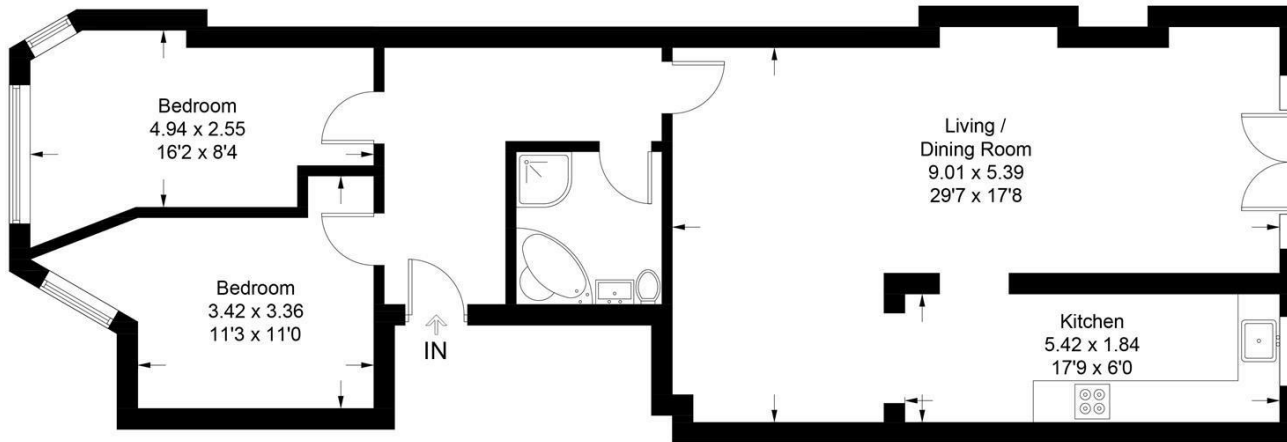


Illustration for identification purposes only, measurements are approximate, not to scale. Fourlabs.co © (ID1218013)



Energy Efficiency Rating		
	Current	Potential
Very energy efficient - lower running costs		
(92 plus) <b>A</b>		
(81-91) <b>B</b>		
(69-80) <b>C</b>		
(55-68) <b>D</b>		
(39-54) <b>E</b>		
(21-38) <b>F</b>		
(1-20) <b>G</b>		
Not energy efficient - higher running costs		
<b>England &amp; Wales</b>	EU Directive 2002/91/EC	

Agents Note: Whilst every care has been taken to prepare these particulars, they are for guidance purposes only. All measurements are approximate and are for general guidance purposes only and whilst every care has been taken to ensure their accuracy, they should not be relied upon and potential buyers/tenants are advised to recheck the measurements

Hove Sales  
Ground Floor 8 The Drive  
Hove  
East Sussex  
BN3 3JA

01273 917915  
hello@nicholasjamesproperty.co.uk  
www.nicholasjamesproperty.co.uk

**Nicholas  
James**

SALES LETTINGS AUCTIONS