



HOVE PARK VILLAS

HOVE, BN3 6HX

£2,400 PCM

Luxury two-bedroom fully furnished apartment in a converted, iconic building overlooking Hove station. The apartment and the building itself have been modernised to an extremely high standard. This second-floor apartment has been carefully designed to create a real sense of space with two generous sized double bedrooms, the master benefits from large full width fitted wardrobes, en-suite shower room. The jewel in the crown is the superb, large south facing kitchen / living spaces. Everywhere you look there are plenty of examples of the high specification. Quartz stone worksurfaces complete the kitchens, whilst there are modern bathroom & shower room fittings. Additional benefits including underfloor heating throughout, double glazing and a passenger lift.

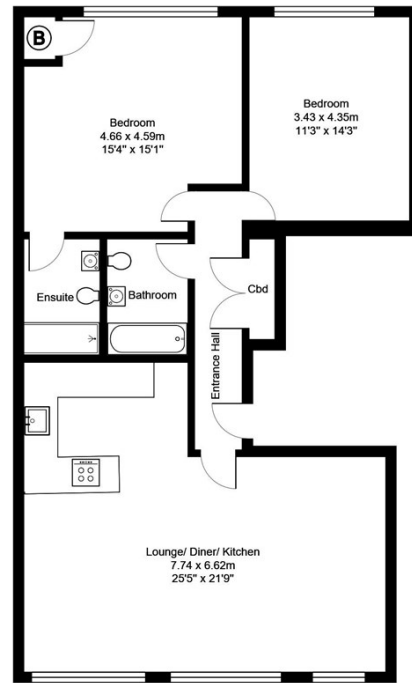
The location will appeal to many. Perfect for commuters being moments from Hove station whilst central Hove and Seven dials are easily accessible with a range of cafes, restaurants and shops

**Nicholas
James**

SALES LETTINGS AUCTIONS



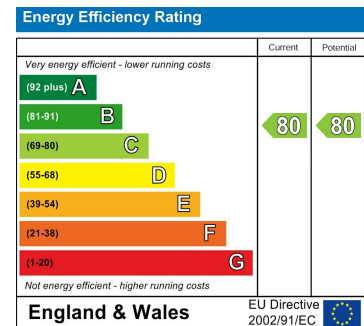
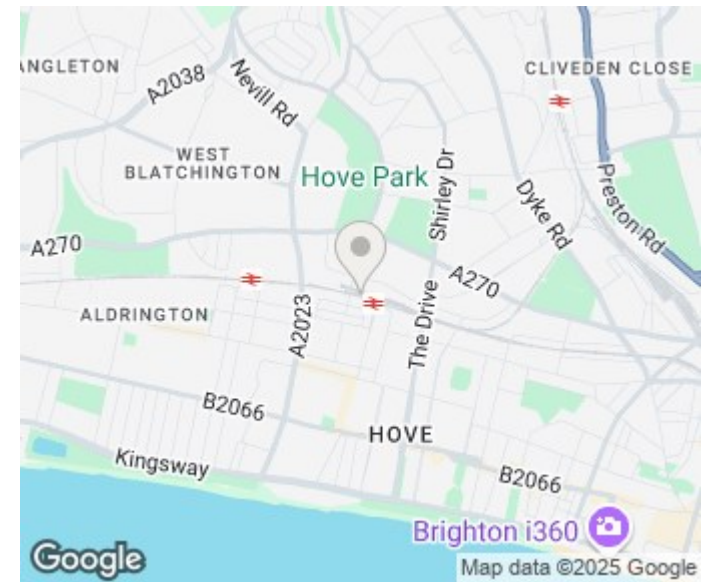




5 Shalima House

Total Area: 96.9 m² ... 1043 ft²

All measurements are approximate and for display purposes only.



Agents Note: Whilst every care has been taken to prepare these particulars, they are for guidance purposes only. All measurements are approximate and are for general guidance purposes only and whilst every care has been taken to ensure their accuracy, they should not be relied upon and potential buyers/tenants are advised to recheck the measurements

Hove Lettings
Ground Floor 8 The Drive
Hove
East Sussex
BN3 3JA

01273 917915
hello@nicholasjamesproperty.co.uk
www.nicholasjamesproperty.co.uk

Nicholas
James

SALES LETTINGS AUCTIONS