



## HOVE PARK VILLAS

HOVE, BN3 6HX

£3,000 PCM

Fantastic, fully furnished penthouse apartment with south facing roof terrace providing far reaching roof top views towards the sea. This superb apartment occupies the entire top floor of this newly converted, iconic building overlooking Hove station. The building and the apartment itself has been modernised to an extremely high standard. There is an abundance of space, with generous sized rooms including three bedrooms, three bathrooms (two En-suite) and the most amazing living area. Everywhere you look there are examples of the high specification afforded to the apartment. Quartz stone worksurfaces complete the kitchen, whilst there are modern bathroom & shower room fittings. There are two roof terraces spanning the entire length of the apartment, with the south facing terrace accessed via multiple rooms including via bi-fold doors from the living room and the master bedroom. Additional benefits include air conditioning, underfloor heating, multi function lighting and a passenger lift.

**Nicholas  
James**

SALES LETTINGS AUCTIONS

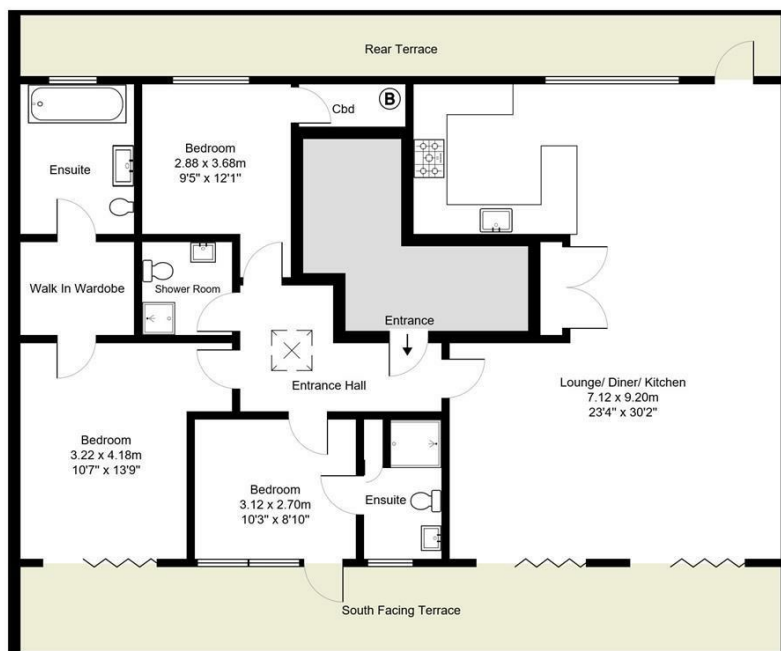




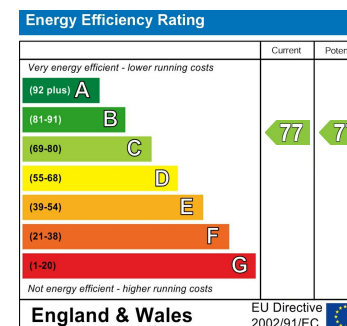








7 Shalima House  
Total Area: 121.8 m<sup>2</sup> ... 1312 ft<sup>2</sup>  
All measurements are approximate and for display purposes only.



Agents Note: Whilst every care has been taken to prepare these particulars, they are for guidance purposes only. All measurements are approximate and are for general guidance purposes only and whilst every care has been taken to ensure their accuracy, they should not be relied upon and potential buyers/tenants are advised to recheck the measurements

Hove Lettings  
Ground Floor 8 The Drive  
Hove  
East Sussex  
BN3 3JA

01273 917915  
hello@nicholasjamesproperty.co.uk  
www.nicholasjamesproperty.co.uk

Nicholas  
James  
SALES LETTINGS AUCTIONS