



## 11 PENZANCE HOUSE, HARBOUR WAY SHOREHAM-BY-SEA, BN43 5BF

LEASEHOLD

Fantastic top floor apartment on Shoreham Beach. This superb apartments benefits from plenty of natural light, spacious rooms and a great layout combining to create a real sense of space throughout. This is the first time an apartment in this development of this particular size and layout has come to the market since first built in 2005.

The well presented accommodation comprises two double bedrooms - one with ensuite shower room, spacious bathroom and impressive open plan living area. A standout feature is the allocated parking space, a valuable asset in this sought after area.

This apartment is an excellent opportunity for those seeking a coastal lifestyle, with local amenities, shops, and transport links all within easy reach, including Shoreham mainline station offering regular and direct links to Brighton, Worthing and London. The beach itself is just a short walk away.

**Nicholas  
James**

SALES LETTINGS AUCTIONS





## Flat 11 Penzance House

Approximate Gross Internal Area = 76.2 sq m / 820 sq ft

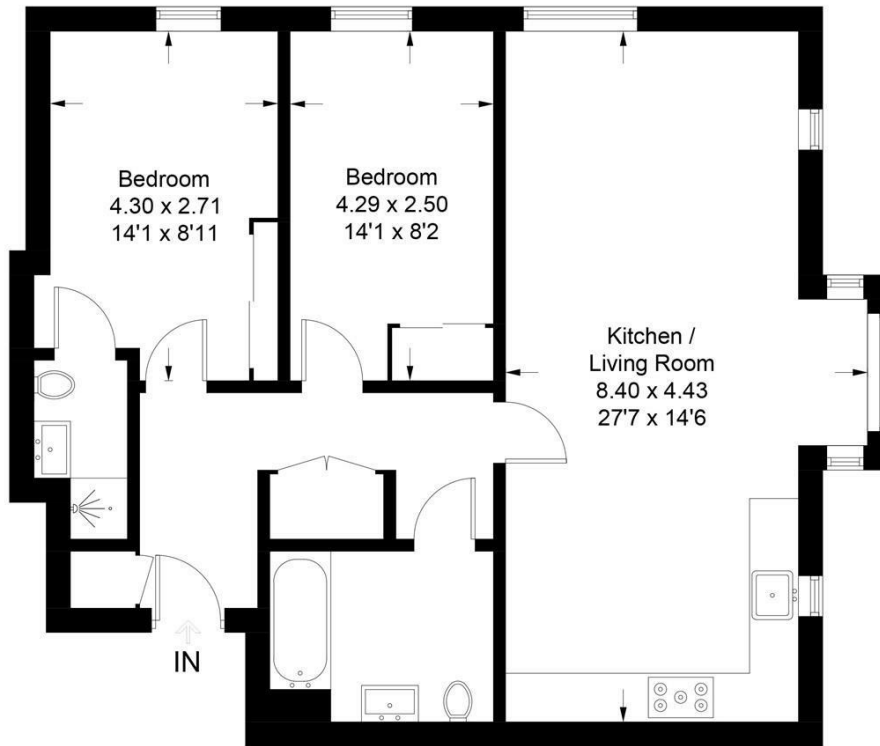


Illustration for identification purposes only, measurements are approximate, not to scale. Fourlabs.co © (ID1227760)



Agents Note: Whilst every care has been taken to prepare these particulars, they are for guidance purposes only. All measurements are approximate and are for general guidance purposes only and whilst every care has been taken to ensure their accuracy, they should not be relied upon and potential buyers/tenants are advised to recheck the measurements

Hove Sales  
Ground Floor 8 The Drive  
Hove  
East Sussex  
BN3 3JA

01273 917915  
hello@nicholasjamesproperty.co.uk  
www.nicholasjamesproperty.co.uk

Nicholas  
James

SALES LETTINGS AUCTIONS