



24 SOUTHVIEW ROAD BRIGHTON, BN42 4TU

£1,500 PCM

Superb, recently modernised two bedroom top floor apartment with off street parking. Occupying the entire first floor of this attractive property. The accommodation comprises two double bedrooms, bathroom and large west facing open plan kitchen/living area.

The location will appeal to many being within easy reach of Southwick Green, Southwick station and the A27, not forgetting the range of local shops close by.

**Nicholas
James**

SALES LETTINGS AUCTIONS





24 Southview Road

Approximate Gross Internal Area = 60.2 sq m / 648 sq ft

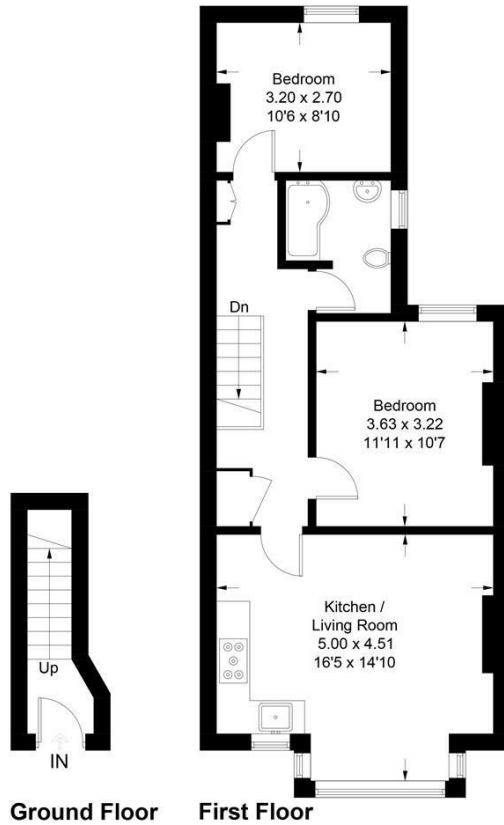


Illustration for identification purposes only, measurements are approximate, not to scale. Fourlabs.co © (ID1287402)



Energy Efficiency Rating		
	Current	Potential
Very energy efficient - lower running costs		
(92 plus) A		
(81-91) B		
(69-80) C		
(55-68) D		
(39-54) E		
(21-38) F		
(1-20) G		
Not energy efficient - higher running costs		
England & Wales	EU Directive 2002/91/EC	

Agents Note: Whilst every care has been taken to prepare these particulars, they are for guidance purposes only. All measurements are approximate and are for general guidance purposes only and whilst every care has been taken to ensure their accuracy, they should not be relied upon and potential buyers/tenants are advised to recheck the measurements

Hove Lettings
Ground Floor 8 The Drive
Hove
East Sussex
BN3 3JA

01273 917915
hello@nicholasjamesproperty.co.uk
www.nicholasjamesproperty.co.uk

**Nicholas
James**

SALES LETTINGS AUCTIONS