



VERNER HOUSE 1-7 VICTORIA TERRACE

HOVE, BN3 2WB

£350,000
SHARE OF FREEHOLD

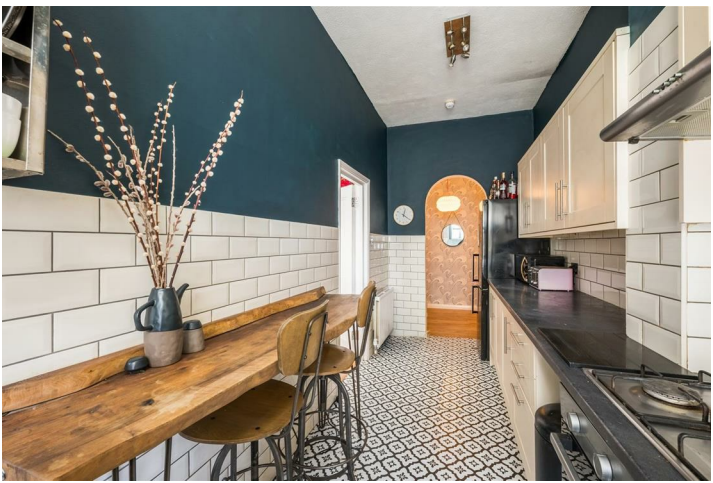
Guide Price £350,000 - £375,000. Superb, ground floor, two bedroom south-facing balcony apartment with sea views and no onward chain!

Set within Verner House on Victoria Terrace, the apartment benefits from south facing aspect, high ceilings and large windows all combining to be beautifully bright throughout. This attractive ground floor apartment boasts; large living / dining room, beautifully presented kitchen with additional storage / office room, amply-sized bathroom and two double bedrooms, one benefitting from en-suite access. The property further benefits from spectacular sea views from the south facing balcony and no onward chain.

Located on Victoria Terrace, this home offers the ideal blend of seafront living and city convenience, with Hove's shops, cafés, restaurants and excellent transport links just a short walk away.

**Nicholas
James**

SALES LETTINGS AUCTIONS





Verner House, Hove

Approximate Gross Internal Area = 91 sq m / 979 sq ft

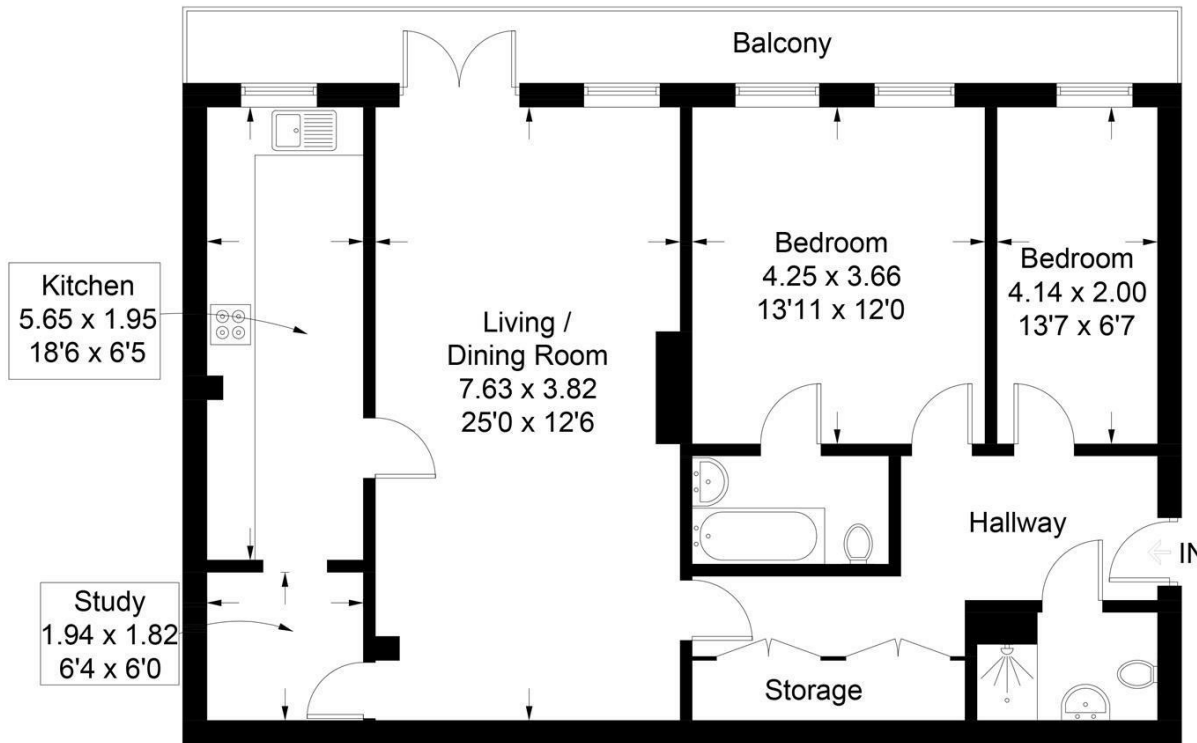


Illustration for identification purposes only, measurements are approximate, not to scale. Fourlabs.co © (ID1289258)



Energy Efficiency Rating		
	Current	Potential
Very energy efficient - lower running costs		
(92 plus) A		
(81-91) B	81	84
(69-80) C		
(55-68) D		
(39-54) E		
(21-38) F		
(1-20) G		
Not energy efficient - higher running costs		
England & Wales	EU Directive 2002/91/EC	

Agents Note: Whilst every care has been taken to prepare these particulars, they are for guidance purposes only. All measurements are approximate and are for general guidance purposes only and whilst every care has been taken to ensure their accuracy, they should not be relied upon and potential buyers/tenants are advised to recheck the measurements

Hove Sales
Ground Floor 8 The Drive
Hove
East Sussex
BN3 3JA

01273 917915
hello@nicholasjamesproperty.co.uk
www.nicholasjamesproperty.co.uk

**Nicholas
James**

SALES LETTINGS AUCTIONS