



83 ABINGER ROAD BRIGHTON, BN41 1SD

FREEHOLD

Guide Price £400,000 - £425,000. Fantastic Victorian family home with off street parking and a west facing garden.

This superb property offers well-proportioned rooms, a great layout and plenty of natural light, creating a real sense of space throughout. The accommodation comprises two reception rooms, kitchen/breakfast room and utility room on the ground floor, while upstairs features two generous double bedrooms and a large family bathroom.

To the front there is off street parking for multiple vehicles, and to the rear a delightful, private west facing garden.

Ideally located close to local shops, cafes and restaurants in Portslade, with easy access to Hove seafront and excellent transport links via Portslade mainline station with direct routes to London.

Nicholas James

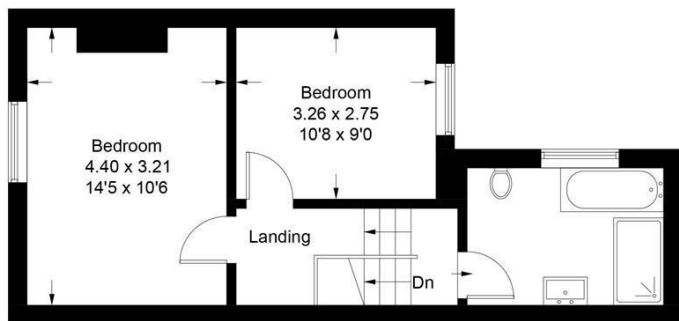
SALES LETTINGS AUCTIONS



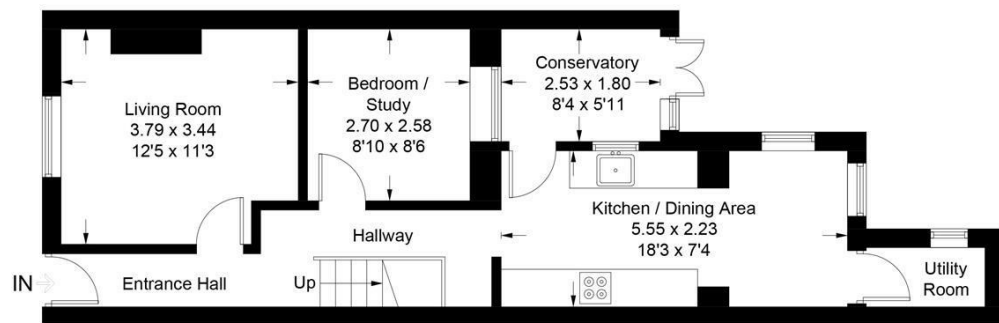


Abinger Road

Approximate Gross Internal Area = 89.8 sq m / 967 sq ft



First Floor



Ground Floor

Illustration for identification purposes only, measurements are approximate, not to scale. Fourlabs.co © (ID1296166)



Energy Efficiency Rating		Current	Potential
Very energy efficient - lower running costs			
(92 plus) A			
(81-91) B			87
(69-80) C			
(55-68) D		67	
(39-54) E			
(21-38) F			
(1-20) G			
Not energy efficient - higher running costs			
England & Wales		EU Directive 2002/91/EC	

Agents Note: Whilst every care has been taken to prepare these particulars, they are for guidance purposes only. All measurements are approximate and are for general guidance purposes only and whilst every care has been taken to ensure their accuracy, they should not be relied upon and potential buyers/tenants are advised to recheck the measurements

Hove Sales
Ground Floor 8 The Drive
Hove
East Sussex
BN3 3JA

01273 917915
hello@nicholasjamesproperty.co.uk
www.nicholasjamesproperty.co.uk

Nicholas
James

SALES LETTINGS AUCTIONS