



96 CROSS ROAD
SOUTHWICK, BN42 4HJ

£1,100 PCM

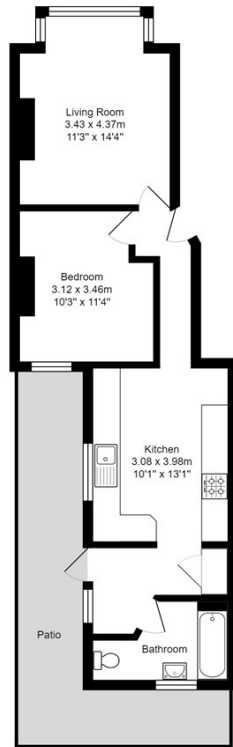
Superb ground floor one bedroom apartment with private rear patio. The accommodation comprises; south facing bay front living room, double bedroom, kitchen, three piece bathroom suite and private rear patio. Further benefits include gas central heating and fully double glazed throughout.

Located on Cross Road the property is perfectly situated being within easy reach of Holmbush centre, Southwick green and the a27, providing easy access for travel across East and West Sussex.

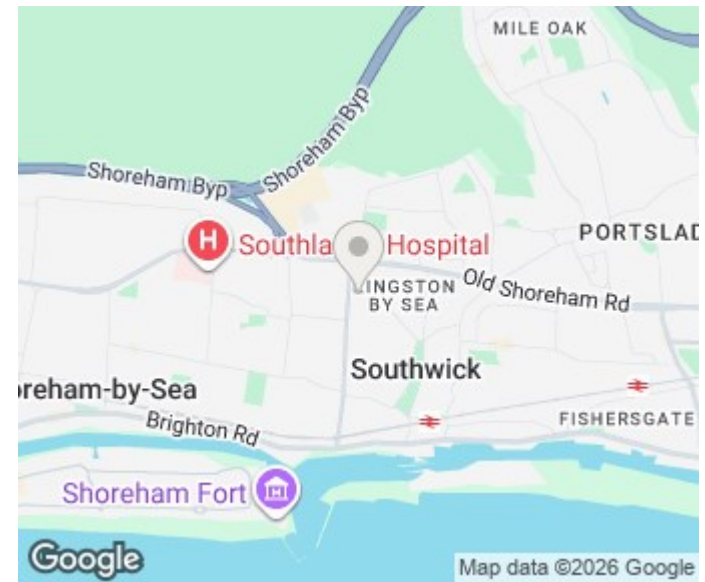
**Nicholas
James**

SALES LETTINGS AUCTIONS





Cross Road, Southwick
 Total Area: 50.2 m² ... 540 ft² (excluding patio)
 All measurements are approximate and for display purposes only.



Energy Efficiency Rating		
	Current	Potential
Very energy efficient - lower running costs		
(92 plus) A		
(81-91) B		
(69-80) C		
(55-68) D		
(39-54) E		
(21-38) F		
(1-20) G		
Not energy efficient - higher running costs		
England & Wales	EU Directive 2002/91/EC	

Agents Note: Whilst every care has been taken to prepare these particulars, they are for guidance purposes only. All measurements are approximate and are for general guidance purposes only and whilst every care has been taken to ensure their accuracy, they should not be relied upon and potential buyers/tenants are advised to recheck the measurements

Hove Lettings
 Ground Floor 8 The Drive
 Hove
 East Sussex
 BN3 3JA

01273 917915
 hello@nicholasjamesproperty.co.uk
 www.nicholasjamesproperty.co.uk

**Nicholas
 James**

SALES LETTINGS AUCTIONS